

End plate, Width: 1.5 mm, Colour: Blue

RAL: Ähnlich 5005

Business data

Article number	27101.5
Article name	PAP 1,5/3A BU
GTIN (EAN)	4044211224332
Packaging unit	20
Quantity unit	PC
Weight per piece (not including packaging)	1.51 g
Weight per piece (including packaging)	1.52 g
Unit of weight	G
Customs number	85389099
Country of origin	DE
Prio-Article	27101.6
Product description	End plate

Technical data

Dimensions

Length	54.1 mm
Width	1.5 mm
Height	24 mm

Materials

Material	Polyamide 6.6
Flammability class UL 94	V-0
Working temperature, min.	-40 °C
Working temperature, max.	120 °C

Environmental Product Compliance

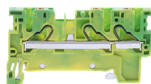
REACH Conform	yes
REACH Reference date	2022-06-10
REACH Candidate Substance Note	No
RoHS Conform	yes

Media

27101.5 PAP 1,5/3A BU

Accessories

Terminal blocks



Protective earth terminal, Push-in connection, Mounting type: Mounting rail TS 35/7.5, Rated cross-section: 1.5 mm², Width: 3.5 mm, Colour: Green-yellow

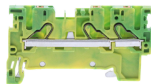
Article number	Article name	GTIN (EAN)	Packaging unit
<u>27003.2</u>	PSL 1,5/3A GNYE	4044211223724	50 ST



Feed-through terminal, Push-in connection, Mounting type: Mounting rail TS 35/7.5, Rated cross-section: 1.5 mm², Width: 3.5 mm, Colour: Grey

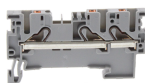
Article number	Article name	GTIN (EAN)	Packaging unit
<u>27002.6</u>	PRK 1,5/3A GR	4044211223717	50

##INVERSE##CONTA-CONNECT



Protective earth terminal, Push-in connection, Mounting type: Mounting rail TS 35/7.5, Rated cross-section: 1.5 mm², Width: 3.5 mm, Colour: Green-yellow

Article number	Article name	GTIN (EAN)	Packaging unit
<u>27003.2</u>	PSL 1,5/3A GNYE	4044211223724	50 ST



Feed-through terminal, Push-in connection, Mounting type: Mounting rail TS 35/7.5, Rated cross-section: 1.5 mm², Width: 3.5 mm, Colour: Grey

Article number	Article name	GTIN (EAN)	Packaging unit
<u>27002.6</u>	PRK 1,5/3A GR	4044211223717	50