

- 1
- 2
- 3
- 4
- 5
- 6
- 7
- 8
- 9
- 10
- 11
- 12
- 13
- 14
- 15
- 16
- 17
- 18

**STANDARD EXECUTIONS**

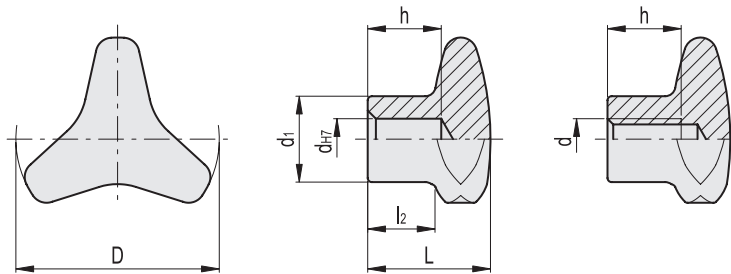
- **VMT-SST**: AISI 303 stainless steel, sandblasted matte finish.
- **VMT-SST-A4**: AISI 316L stainless steel, sandblasted matte finish.

**SPECIAL EXECUTIONS ON REQUEST**

- Hub, threaded pass-through hole.
- Glossy finish.

**FEATURES AND APPLICATIONS**

The three-lobe shape with large recesses is particularly ergonomic, ensuring an effective grip even with work gloves. The design without rear recesses prevents unhealthy residues from depositing, ensuring maximum ease of cleaning. Particularly suitable for applications on machines and equipment whose parts must be frequently cleaned by using water jets or steam.



| Conversion Table  |      |
|-------------------|------|
| 1 mm = 0.039 inch |      |
| D                 |      |
| mm                | inch |
| 40                | 1.57 |
| 50                | 1.97 |
| 60                | 2.36 |

**VMT-SST**

INOX STAINLESS STEEL METRIC

| Code   | Description    | D  | d   | dh7 | L  | d1 | l2 | h  | △   |
|--------|----------------|----|-----|-----|----|----|----|----|-----|
| 169592 | VMT-SST-40-M6  | 40 | M6  | -   | 26 | 18 | 15 | 12 | 65  |
| 169591 | VMT-SST-40-8   | 40 | -   | 8   | 26 | 18 | 15 | 15 | 70  |
| 169593 | VMT-SST-40-M8  | 40 | M8  | -   | 26 | 18 | 15 | 15 | 70  |
| 169602 | VMT-SST-50-M8  | 50 | M8  | -   | 30 | 21 | 17 | 15 | 109 |
| 169601 | VMT-SST-50-10  | 50 | -   | 10  | 30 | 21 | 17 | 18 | 114 |
| 169603 | VMT-SST-50-M10 | 50 | M10 | -   | 30 | 21 | 17 | 18 | 138 |
| 169612 | VMT-SST-60-M10 | 60 | M10 | -   | 35 | 25 | 18 | 18 | 190 |
| 169611 | VMT-SST-60-12  | 60 | -   | 12  | 35 | 25 | 18 | 22 | 195 |
| 169613 | VMT-SST-60-M12 | 60 | M12 | -   | 35 | 25 | 18 | 22 | 232 |

**VMT-SST-A4**

INOX STAINLESS STEEL

| Code   | Description       | D  | d   | dh7 | L  | d1 | l2 | h  | △   |
|--------|-------------------|----|-----|-----|----|----|----|----|-----|
| 169597 | VMT-SST-A4-40-M6  | 40 | M6  | -   | 26 | 18 | 15 | 12 | 65  |
| 169596 | VMT-SST-A4-40-8   | 40 | -   | 8   | 26 | 18 | 15 | 15 | 70  |
| 169598 | VMT-SST-A4-40-M8  | 40 | M8  | -   | 26 | 18 | 15 | 15 | 70  |
| 169607 | VMT-SST-A4-50-M8  | 50 | M8  | -   | 30 | 21 | 17 | 15 | 109 |
| 169606 | VMT-SST-A4-50-10  | 50 | -   | 10  | 30 | 21 | 17 | 18 | 114 |
| 169608 | VMT-SST-A4-50-M10 | 50 | M10 | -   | 30 | 21 | 17 | 18 | 138 |
| 169617 | VMT-SST-A4-60-M10 | 60 | M10 | -   | 35 | 25 | 18 | 18 | 190 |
| 169616 | VMT-SST-A4-60-12  | 60 | -   | 12  | 35 | 25 | 18 | 22 | 195 |
| 169618 | VMT-SST-A4-60-M12 | 60 | M12 | -   | 35 | 25 | 18 | 22 | 232 |

Clamping elements