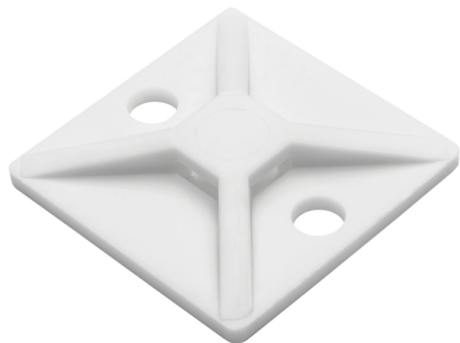


Specification Sheet

Part Number: MB410H4



Compact size fits most mounting applications.

Simple to install with a screw or rivet.

Single hole attachment with two-way entry for cable tie.

Screw Mount Cable Tie Base, 1.12" x 1.12", 0.18" Max Tie Width, 0.18" Hole Dia, PA66, White, 500/pkg

Article Number 151-00319

Type MB4

Color White (WH)

Quantity Per bag

Product Description These cable tie mounts are compact in size. They are designed for simple yet robust installation. They pair with a cable tie for mounting applications including telecom equipment, switchgear and control cabinets.

Short Description Screw Mount Cable Tie Base, 1.12" x 1.12", 0.18" Max Tie Width, 0.18" Hole Dia, PA66, White, 500/pkg

Global Part Name MB4-PA66-WH

Length L (Imperial)	1.12
Length L (Metric)	28.5
Fixation Method	Screw Mounting and Rivet
Width W (Imperial)	1.12
Width W (Metric)	28.5
Cable Ties	T18 - 50
Height H (Imperial)	.19
Height H (Metric)	4.80
Cable Tie Width Max (Imperial)	0.18
Cable Tie Width Max (Metric)	4.6
Mounting Hole Diameter D (Imperial)	0.18
Mounting Hole Diameter D (Metric)	4.6 mm
Mounting Hole Diameter D Max (Metric)	4.6
Mounting Hole Centers (Imperial)	0.8

Material	Polyamide 6.6 (PA66)
Material Shortcut	PA66
Flammability	UL 94 V-2
Operating Temperature	-40°F to +185°F (-40°C to +85°C)
Reach Compliant (Article 33)	No
ROHS Compliant	Yes
Certification/Specification	UL
UL Recognized (US)	Yes
UL Recognized (US and Canada)	Yes
Package Quantity (Imperial)	500
Package Quantity (Metric)	500
Customs Number	3926909988